



Presented by  **LEUPOLD®**

JAN. 31 - FEB. 4, 2024 *Washington*
STATE FAIR
EVENTS CENTER

Sponsored by



PLAN YOUR NEXT
**OUTDOOR
ADVENTURE**

SHOW HOURS

Wed-Fri 12 noon – 8 p.m.
Saturday 10 a.m. – 8 p.m.
Sunday 10 a.m. – 4 p.m.

  /thesportshows

ADMISSION

Adults..... \$15
Juniors (16 & Under)..... \$5
Military* (w/ valid ID) \$10
After 4pm (Wed-Sat) \$10
2-Day Pass \$24

*Proof of ID required to receive discount.
Plus credit and service fees.

LOOK INSIDE

for show features, exhibitor list, detailed floorplan and daily seminar schedules. For complete show info, go to **THESPORTSHOWS.COM.**

WELCOME TO THE WASHINGTON SPORTSMEN'S SHOW PRESENTED BY LEUPOLD!

Take your time and enjoy the show, there's a lot to see and do.

The Kids Free Trout Pond is loaded with fat, frisky trout for kids 12 and under to catch and keep. Everything's provided and kids can keep up to two trout each. And it's free with your admission into the shows.

The Western Washington Toyota Dealers Fistful of Cheaters is another must-do stop. Everybody wins! Just check-in at the Toyota booth and when it's your turn, grab a handful of Beau Mac Cheaters, drop them into the cup and you get to keep all the ones that land in the cup. If one of them has a Toyota logo on it you get another great prize. . . and there are hundreds! Edge Rods, apparel, binoculars, flashlights, crab gear and more!

The Washington Sportsmen's Show seminar series is world-class! From tuna fishing, turkey hunting and walleye fishing to blacktail deer hunting, smallmouth bass and bank fishing for salmon and steelhead, it's the most complete fishing and hunting seminar series in the state. Renowned hunter and public lands advocate, Randy Newberg, is presenting an entirely new series of seminars at this year's show that's not-to-be-missed.

Be sure to stop by the Head and Horns Competition, brought to you by Danner, Fort Knox Safes, Gerber, LaCrosse, Leupold and Savage Arms to admire this year's entries or to enter

your own head or horns. One or more may be new state records! And the jaw-dropping Wall of Kings is right next to the Competition. It's one of the most impressive displays of big game mounts to be found anywhere in the country.

Thanks to the Western Washington Toyota Dealers, survival expert, Brett Stoffel is also on-hand all days of the show to share his deep knowledge of staying safe and surviving a night or more in the backcountry if you're lost or injured. For anyone that ventures off-road this is a seminar that could save your life. . . it's saved others.

And there's so much more. . . Learn how to tie flies with David Williams, save on thousands of fishing and hunting products at show-only prices, see what's new in outdoor gear, talk to the experts --- there are dozens in the show, plan your vacation or book a guide. The promise of the Washington Sportsmen's Show is to bring you the very best in hunting and fishing, once-a-year for five days. We hope you enjoy the show and we're deeply grateful for your support. Thank you!

The O'Foughlins

In Oregon and Washington, RMEF completed 1,816 projects that conserved or enhanced 1,377,452 acres of habitat and opened or improved access to 270,763 acres, including phase I (4,609 acres) of the landscape-scale Minam River project in northeast Oregon. Phase II adds 10,964 acres, open for hunting and other recreational activity.



Help us do more to ensure the
future of elk and elk country
JOIN RMEF TODAY
RMEF.ORG | 800-CALL ELK

PHOTO: DAVID JENSEN

SHOW ATTRACTIONS



Kids 12 and younger can fish for free and take up to two trout home if they wish. Everything's provided including the plastic bag to take them home in. This is one of the most popular attractions at our shows and it's become a "generational feature" with grandparents who caught their first trout in the pond now taking their grandkids. And to make things really interesting we've added several trophy-sized trout in the mix as well. . . so hang on!



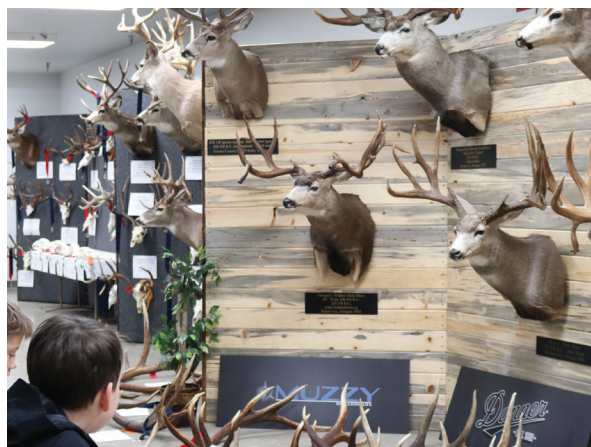
Addicted Fishing Mega Bash & Steelhead Alley Movie Premiere. Welcome to Steelhead Alley! Marlin, Jordan, Cameron, Nick, and Big Dave, embark on their first Great Lakes steelhead trip together. Flying from Portland, Oregon to good ole' Cleveland, Ohio, they'll be immersed in a completely new community of anglers with harsh winters, difficult conditions and different fishing strategies, but with the same fierce desire to crush some steel.



Survival expert Brett Stoffel, sponsored by the Western Washington Toyota Dealers, is conducting daily seminars and he's also at the Toyota booth the entire show. His expertise has saved the lives of those that have attended his seminars. Learn to make fire under the most difficult conditions. Learn survival basics and what you should always have with you or in your vehicle anytime you venture into the backcountry.



Everyone wins with Toyota's Fistful of Cheaters! It's easy and it's FREE. Just go to the Toyota booth, sign-up and get in line. When it's your turn see how many Beau Mac Cheaters you can grab and drop into the cup. Whatever you're able to capture you take home with you! And, if one of the Cheaters you grab happens to have a Toyota logo on it, you win a prize!



With more than 10,000 entries since its inception in the mid-90's, the **Head and Horns Competition** has logged hundreds of new records. . . yours could be the next! For \$10 our certified measurers will measure your antlers, horns, head or turkey beard. If you choose to enter it in the competition, that's another \$30. The prizes are fantastic! Special thanks to our Head & Horns sponsors.



Public lands advocate and hunter Randy Newberg joins us Thursday to Sunday at the show. He'll be hosting daily seminar sessions in the Hunting (Green) Theater. It's your opportunity to meet Randy and have a conversation. Randy is one of the country's leading hunting authorities with valuable insights on securing tags, trip preparation, in-the-field tips and much more!



This year's **seminar series** is not to be missed. "A" list speakers cover the spectrum of fishing and hunting opportunities that are available across the NW.



Hit the target with **Skookum Archers**. It's free! This is a great place to get started. Skookum Archers is a local club and archery range that caters to archers of all skill levels, from beginner to expert.



Making its inaugural debut at the 2024 show is the Mack's Lure Walleye Tank! We'll be talking walleye and trout fishing with leading experts and Mack's Lure Pro-Staff members.

EXHIBITOR LIST

| EXHIBITOR | BOOTH | | |
|--|--------------------------|---|------------------------------|
| 5 S OUTFITTING..... | 513 | CONCONULLY CHAMBER OF COMMERCE..... | 553 |
| 10 BARREL BREWING..... | SPORTSMENS LOUNGE | COVERT OUTFITTING..... | 624 |
| ACTIVE OUTDOORS..... | 706 | CRITTER COVE MARINE GROUP INC..... | 406 |
| ABSTRACT WATERCRAFT..... | 12 OUTSIDE | CRUSTACEAN SENSATION BAITING PRODUCTS..... | 456 |
| ADDICTED FISHING..... | 468 | CUBESERIES RV CORP..... | 652 |
| ADVANCE TECH ORTHOTICS..... | 517 | CUTCO CUTLERY WASHINGTON..... | 512 |
| ALASKA KINGFISHERS..... | 526 | DANNER INC/LACROSSE FOOTWEAR ... 609, HEAD & HORNS | |
| ALASKA OUTDOORS ADDICTION..... | 560 | DEFIANCE MARINE..... | 1302 |
| ALBERTA BOREAL OUTFITTING..... | 1034 | DELTA WATERFOWL..... | 1029 |
| ALEX ARTS & CONSTRUCTION..... | 1 OUTSIDE | DIAWA FISHING PRODUCTS..... | 664 |
| ALLIED BOATS..... | 1355 | DINKWE SAFARIS..... | 552 |
| AMERICAN DELTA PRODUCTS/HUNTER HONER..... | 1065 | DOCKSIDE CHARTERS..... | 217 |
| AMSOIL PEARSON-LIBERTY ASSISTS LLC..... | 267 | DUCKS UNLIMITED-WA STATE..... | 646 |
| ANGLERS EDGE SPORTFISHING..... | 359 | EARLY WINTERS OUTFITTING/SADDLE CO..... | 1073 |
| ANGLERS GUIDE SERVICE..... | 524 | EAST CAPE SAFARIS..... | 1071 |
| ANGLERS INN INTERNATIONAL..... | 558 | EDGE RODS..... | 259 |
| ANTIQUE TACKLE COLLECTORS..... | 130 | EDWARD JONES..... | 1070 |
| APACHE CAMPING CENTER INC..... | 8 OUTSIDE | ELK JUNCTION OUTFITTERS GUIDING..... | 1060 |
| ARCHERY WORLD..... | 156 | EMERGENCY RESPONSE INTERNATIONAL..... | 440 |
| ARIMA BOATS..... | 135N | EUREKA PEAK LODGE & OUTFITTERS..... | 1078 |
| ARIZONA ELK OUTFITTERS..... | 616 | EVERGOING PRODUCTS GROUP LLC..... | 100, 105 |
| AUTO FX..... | 251 | EXCEL FISHING CHARTERS..... | 546 |
| BABINE GUIDE OUTFITTERS/TUKII LODGE..... | 416 | EXTREME SPORTSMAN TRAILERS..... | 1001 |
| BAJA PIRATES..... | 216 | FAMILY HUNTING CLUB..... | 1036 |
| BAJA RANCHEROS OF LA PAZ..... | 1010 | FANTOM GAME CALLS..... | 154 |
| BAREWEST WAKEBOARD & FISH TOWERS..... | 527 | FARM FRESH NORTHWEST..... | 1077 |
| BARTHOLET WILDLIFE GALLERY..... | 1002 | FIRESIDE PINE..... | 344 |
| BARTLETT CREEK OUTFITTERS..... | 1079 | FISH HUNT NORTHWEST..... | 569 |
| BC GUIDE OUTFITTERS..... | 554 | FISH ON SPORTS..... | 713 |
| BEAUMAC ENTERPRISES..... | 606 | FISH WASHINGTON LLC DBA CATCH ZONE..... | 368 |
| BECHAROF LODGE FISHING..... | 518 | FISHERMANS GOLD..... | 408 |
| BETTER BUILT BARNES..... | 147 | FORD CREEK GUEST RANCH..... | 201 |
| BIG SALMON RESORT/LING DADDY..... | 420 | FORT KNOX SAFES..... | HEAD & HORNS |
| BITTERROOT MOUNTAIN OUTFITTERS..... | 422 | FOUR ACES RANCH..... | 1037 |
| BLACK LABEL BBQ..... | 153 | FREEDOM CHARTERS..... | 1076 |
| BLAZE ANTI FOG..... | 306 | FROZEN CRITTERS.NET..... | 1098 |
| BOBS FREAKIN NUTS..... | 1006 | FW SAFARI..... | 1008 |
| BOULTON POWERBOATS INC..... | 268, 3 OUTSIDE | GAMAKATSU USA INC..... | 508 |
| BOWRON RIVER GUIDING..... | 1011 | GARAGE FORCE..... | 357 |
| BRADS FISHING & MAC PROP SAVERS..... | 600 | GARLIC GOURMAY/GARLIC EXPRESSIONS..... | 656 |
| BRAVO MANUFACTURING INC..... | 1099 | GARY M HINTZ..... | 1022 |
| BRETT STOFFEL, SURVIVAL EXPERT..... | 440 | GERBER GEAR..... | HEAD & HORNS |
| BRIAN SUDDABY SAFARIS AFRICA..... | 412 | GENESIS AUTOMOTIVE & RV REPAIR INC..... | 172 |
| BROWNS BAY RESORT..... | 1051 | GHOST BULL HUNTING..... | 1052 |
| BURTONS MERCH..... | 1014 | GHOST SCREAM HOT SAUCE..... | 365 |
| CAMANO ISLAND COFFEE ROASTERS LLC..... | 1046 | GLACIER BEAR LODGE..... | 206 |
| CANNON DOWNRIGGERS..... | 506 | GOLD VALLEY LOG HOMES..... | 1044 |
| CEDAR RIVER BOWMEN..... | 1015 | GRANT COUNTY TOURISM..... | 509 |
| CENTRAL PIERCE FIRE & RESCUE..... | PV-1 | GRAYS HARBOR TOURISM..... | 1042 |
| CHEESEBUTTA..... | 317 | GRUNDENS..... | 756 |
| CHIRO ONE WELLNESS CENTER..... | 1066 | H & H BRANDS 30 SECOND SALSA/CAMPFIRE FOODS NW..... | 501 |
| CHROME JUNKIES..... | 301 | HAMPAN..... | 1061 |
| CLACKACRAFT RIVER BOATS..... | 1090 | HAPPY YAK LLC..... | 467 |
| CLASSIC CREATIONS..... | 561 | HARROD OUTDOORS LLC..... | 453 |
| CLIX THERAPY..... | 425 | HAWAIIAN MOON..... | 351 |
| COATNEY KUSTOM FAB..... | 1091 | HAXTONS CANVAS & UPHOLSTERY LLC..... | 543 |
| COLDWATER STRONG..... | 461 | HOME IN THE WILD..... | 1095 |
| | | HOMECO SALES LLC..... | 205 |
| | | HOOK N THEM UP FISHING CHARTERS..... | 171 |
| | | HOTFIRE HUNTING & FISHING SAFARIS..... | 1064 |
| | | HUMMINGBIRD ELECTRONICS..... | 506 |
| | | I-90 MOTORSPORTS..... | 142 |
| | | IDAHO ELK OUTFITTERS..... | 263 |
| | | ILIWA SAFARIS..... | 1047 |
| | | IMAGEWORKS..... | 350 |
| | | INFINITE PRODUCT SOLUTIONS..... | 367 |
| | | ISLAND POINT LODGE..... | 421 |
| | | JOUBERT PRO HUNT..... | 363 |
| | | JW WORLD RESOURCES..... | 369, 343, 427 |
| | | KAWEKA HUNTING ADVENTURES..... | 401 |
| | | KENLEE JERKY..... | 361 |
| | | KEVIN LARSON GUIDE SERVICE LLC..... | 265 |
| | | KING SALMON MARINE INC..... | 1310 |
| | | KNIGHTS WELDING..... | 404 |
| | | KNOTTY DUCK DECOYS/ESTABLISHED OUTFITTERS..... | 319 |
| | | L H FRENCH CO..... | 506 |
| | | LACROSSE FOOTWEAR/DANNER INC. .. 609, HEAD & HORNS | |
| | | LAMIGLAS INC..... | 601 |
| | | LATEGAN SAFARIS..... | 614 |
| | | LEAFFILTER NORTH LLC..... | 1075 |
| | | LEDLENSER..... | 1041 |
| | | LESTERS AMERICAN MADE MARINE GEAR..... | 556 |
| | | LEUPOLD & STEVENS INSTRUMENTS INC..... | 256, HEAD & HORNS |
| | | LIGHTHOUSE CAVALCADE..... | 655 |
| | | LONG SHOT INDOOR RANGE INC..... | 1058 |
| | | LUHR JENSEN..... | 764 |
| | | M & E SALES..... | 811 |
| | | MACKS LURE..... | 567, WALLEYE TANK |
| | | MADAME LURE..... | 502 |
| | | MAGIC MASSEUSE..... | 445 |
| | | MAJESTIC EAGLE LODGE..... | 414 |
| | | MAMMOTH OVERLAND..... | 17 OUTSIDE |
| | | MAPLE GROVE RV..... | 21 OUTSIDE |
| | | MARAKESH LEATHER..... | 510 |
| | | MASCHMEDT & ASSOCIATES..... | 664 |
| | | MAVEN..... | 448 |
| | | MCOMIES CUSTOM LURES..... | 806 |
| | | METOLIUS HEMP CO..... | 621 |
| | | MILITARY ORDER OF THE PURPLE HEART CHPT 72..... | 124 |
| | | MILLER RANCH & HUNTING PRESERVE..... | 1017 |
| | | MINN-KOTA..... | 506 |
| | | MISTY RIVER OUTFITTERS LTD..... | 354 |
| | | MULE DEER FOUNDATION..... | 458 |
| | | MULE EXPEDITION OUTFITTERS..... | 144 |
| | | MUSTAD AMERICA..... | 400 |
| | | MUZZLELOADER SUPPLY..... | 1019 |
| | | MY ROD HOLDER LLC..... | 520 |
| | | NADINA GUIDE OUTFITTERS..... | 302 |
| | | NATURE NATES LLC..... | 1028 |
| | | NEKOWIN CREEK RV RESORT/SPR OF OREGON..... | 622 |
| | | NEXT ADVENTURE PADDLE SPORTS CENTER..... | FD - 1 |
| | | NEXT/JUMP OUTFITTERS..... | 650 |
| | | NIMROD OUTDOOR COMPANY..... | 1000 |
| | | NO LIMITS & CO..... | 1045 |
| | | NOOTKA MARINE ADVENTURES..... | 1005 |
| | | NORTHERN PROFESSIONAL OUTFITTERS AND GUIDE SERVICE..... | 1057 |

| | | | | | |
|--|-------------------------------|--|-----------------------|---|----------------|
| NORTHWEST BAIT & SCENT | 603 | SEA FOAM..... | 514 | WESTERN CASE..... | 151 |
| NORTHWEST GAMEHAWKERS..... | 426 | SEATTLE FISHING COMPANY..... | 658 | WESTERN FISHING OPERATIONS..... | 559 |
| NORTHWEST SAFE COMPANY..... | 148 | SEATTLE-TACOMA GERMAN WIREHAIR POINTER CLUB..... | 125 | WESTERN WA ENGLISH SPRINGER SPANIEL CLUB..... | 127 |
| NORTHWEST SCOPEPRO..... | 218 | SEAWALKER CHARTERS/JOHN THOMAS ADVENTURES..... | 459 | WESTERN WASHINGTON TOYOTA DEALERS..... | 440 |
| NORTHWEST SPICES..... | 1085 | SHOOTING STIX SAFARIS..... | 203 | WESTERN WASHINGTON WALLEYE CLUB..... | 444 |
| NORTHWEST SPORTSMAN MAGAZINE..... | 352 | SILENCER CENTRAL..... | 1054 | WHODAT TOWERS..... | 417 |
| NORTHWESTERN OUTDOOR RADIO..... | 358 | SIX CHICKS BOUTIQUE LLC..... | 521 | WILDER RV..... | 19, 20 OUTSIDE |
| NOVAGRADE..... | 254 | SIXES AND SEVENS OUTDOORS..... | 1027 | WILDERNESS MINT LLC..... | 446 |
| NRA-ILA WA..... | 450 | SKOOKUM ARCHERY CLUB..... | ARCHERY | WINDSONG CHARTERS..... | 175 |
| NRA/SHOWS & EXHIBITS DEPT..... | 1069 | SMITH BROTHERS FARMS..... | 625 | WOLVERINE RANGE OUTFITTERS LTD..... | 346 |
| NW REC LLC..... | FD - 3 | SNAP IT HOT..... | 269 | WOOD MIZER LLC..... | 4 OUTSIDE |
| OCEAN SPORTFISHING CHARTERS..... | 571 | SNYDER INNOVATIONS LLC..... | 360 | WOOLDRIDGE BOATS INC..... | 654 |
| OKUMA FISHING PRODUCTS..... | 706 | SOUTH HILL RV SALES INC..... | 14 OUTSIDE | YAKIMA BAIT COMPANY..... | 763 |
| OLD SCHOOL GUN SCHOOL..... | 168 | SOUTH SOUND BIRD DOG CLUB..... | 128 | YI SHINE TECH..... | 143 |
| OMG OLIVE OILS & VINEGARS..... | 167 | SOUTH SOUND STRUTTERS NWTFC CHAPTER..... | 1074 | YOUTH OUTDOORS UNLIMITED..... | 1012 |
| OREGON LURE COMPANY..... | 457 | SPORTCO WAREHOUSE..... | 807, 700, 760 | ZEROFIT USA..... | 424 |
| OSPREY SCOPES..... | 1067 | SPOT LLC..... | 1016 | ZEROGUIDEFEEES.COM..... | 616 |
| OUTDOOR BEARDS..... | 1080 | STAR BLINK PRODUCT INC..... | 657 | ZILLA BAITS..... | 706 |
| OUTDOOR EMPORIUM..... | 870, 863 | STATE FARM PAUL HENDERSON AGENCY..... | 356 | | |
| OUTLANDER CHARTERS..... | 619 | STRYKER RODS..... | 463 | | |
| OWNER HOOKS..... | 706 | SUNRISE EBIKES..... | 758 | | |
| PACIFIC SALMON CHARTERS..... | 516 | SURVIVOR PRODUCTS LLC..... | 207 | | |
| PACIFIC STATES MARINE FISHERIES COM..... | 549 | T-MOBILE..... | 1062 | | |
| PACIFIC TRAVEL CENTER..... | 11 OUTSIDE | TACOMA BOAT SALES AND SERVICE..... | 643 | | |
| PAUTZKE BAIT CO..... | 407 | TACOMA SPORTSMENS CLUB..... | 564 | | |
| PERIL SKY LLC..... | 318 | TEXAN KNIVES..... | 611 | | |
| PERUVIAN KILLER JIGS..... | 451 | THE BLACK FLAG..... | 1018 | | |
| PHEASANTS FOREVER..... | 411 | THE BLACKTAIL COACH..... | 1050 | | |
| PIKEMINNOW PROGRAM..... | 549 | THE BLACKTAIL COMPANY..... | 1093 | | |
| PLINE..... | 706 | THE DON COFFEY COMPANY..... | 660 | | |
| PNW INTERNATIONAL INC..... | 163 | THE DUCK CAMP..... | 305 | | |
| PNW MARKETING & TRAVEL INC..... | 1039 | THE FALLEN OUTDOORS - TEAM WA..... | 1035 | | |
| PREPSENTIAL..... | 1048 | THE NORTH SHORE LODGE..... | 620 | | |
| PRO-TROLL..... | 663 | THE SUNGLASS GUY INC..... | 165 | | |
| PROLITE ROD TECHNOLOGY..... | 409 | THE SWEETEST THINGS..... | 545 | | |
| PSRFE..... | 548 | THE WET NOSE..... | 1024 | | |
| PUDDING RIVER WOOD CARVING STUDIO..... | 644 | THE WILD ALASKAN LODGE..... | 1040 | | |
| PUGET MARINA..... | 1301, 1306 | THERMAL DISPATCH OPTICS..... | 1013 | | |
| PUGET SOUND ANGLERS - STATE BOARD..... | 419 | TORK LIFT CENTRAL..... | 452 | | |
| PUGET SOUND LABRADOR RETRIEVER CLUB..... | 126 | TOYOTA..... | 440 | | |
| PURSIFY..... | 711 | TRACT OPTICS..... | 1043 | | |
| Q STOVES..... | 10 OUTSIDE | TRADITIONAL BOWHUNTERS OF WA..... | 1097 | | |
| QUALICUM RIVERS SALMON FISHING RESORT..... | 1030 | TRAILER WORLD..... | 1003 | | |
| QUEEN CHARLOTTE LODGE..... | 348 | TRAPLINE TAXIDERMY..... | 612 | | |
| QUICKLOAD WATERFOWL OUTFITTERS LTD..... | 413 | TWISTED WATERS GUIDE SERVICE..... | 604 | | |
| QUICKSILVER KENNELS..... | 1056 | TX OUTFITTERS..... | 1059 | | |
| RAPALA USA..... | 764 | US COAST GUARD 13TH DISTRICT..... | 519 | | |
| RICK OLSON COMPANY..... | 511 | VALLEY RV SUPERCENTER..... | 2 OUTSIDE | | |
| RIDGE TO RIVER OUTDOORS LLC..... | 443 | VERLES SPORTS CENTER & MARINE..... | 640, 840, FD - 4, 841 | | |
| ROBOLIZE LLC..... | 307 | VETERANS OF FOREIGN WARS..... | 164 | | |
| ROCKAGATOR..... | 370 | VMC HOOKS..... | 764 | | |
| ROCKY MOUNTAIN ELK FOUNDATION..... | 1032, HEAD & HORNS | VONNIES CHARTERS..... | 500 | | |
| ROCKY POINT RESORT..... | 371 | VORTEX..... | 760 | | |
| ROE MORRIS KNIFEMAKING..... | 1004 | WA DEPT OF FISH & WILDLIFE..... | 550 | | |
| ROSEDALE SAFARIS..... | 1031 | WARNE MANUFACTURING COMPANY..... | 563 | | |
| RUGGED MAPS..... | 316 | WASHINGTON OUTFITTERS & GUIDES ASSN..... | 1038 | | |
| RUSS FIELD SAFARIS..... | 402 | WASHINGTON STATE MUZZLELOADER ASSN..... | 1003N | | |
| SAFARI CLUB INTERNATIONAL..... | 1025 | WASHINGTONIANS FOR WILDLIFE CONSERVATION..... | 364 | | |
| SAVAGE FIREARMS..... | HEAD & HORNS | WATERS EDGE LODGE..... | 465 | | |
| SCOTTY FISHING AND MARINE..... | 503 | WERE THE WURST..... | 403 | | |

The Exhibitor List is subject to change. Every effort has been made to ensure accuracy until and through press time. Last-minute changes or additions are at the show office. Show admission refunds will not be granted due to a change in listing.



Scan the QR code to the left with your smartphone to view our searchable online Exhibitor List.



FREE KID'S TROUT POND 12 & under, all gear provided

SPORTSMEN'S SHOWS

TRADING POST

THE NORTHWEST'S PREMIER ONLINE OUTDOOR DIRECTORY

VIEW THE FULL DIRECTORY AT **SSTRADINGPOST.COM**

FLOOR PLAN

Mack's
MACK'S LURE WALLEYE TANK

| | |
|-------------------------|----------------------------|
| PUGET MARINA 1301 | PUGET MARINA 1306 |
| DEFIANCE MARINE 1303 | KING SALMON MARINE 1310 |

FREE
KID'S TROUT POND

CENTENNIAL

ALEX ARTS & CONSTRUCTION
1

VALLEY RV SUPERCENTER
2

CONCESSIONS
BOULTON POWERBOATS INC
3

FEATURE

APACHE CAMPING CENTER
8

BLUE GATE ENTRANCE TICKETS



HEAD & HORNS COMPETITION

Bring your horns, antlers and/or heads. Get them scored and enter to win great prizes.



SHOW OFFICE

BLUE FISHING THEATER

SKOOKUM ARCHERS

ALLIED BOATS 135S ARIMA BOATS 135N

TOYOTA Western Washington Toyota Dealers 440

VERLES SPORTS CENTER AND MARINE 640

I-90 MOTORSPORTS 142 YI SHINE TECH 143

343 427 443 527 543 HAXTONS CANVAS

344 426 444 526 545 625

MULE EXPEDITION OUTFITTERS 145

346 424 446 524 546 624

TACOMA BOAT SALES AND SERVICE 643

NORTHWEST SAFE COMPANY 148 BETTER BUILT BARN 147

348 422 448 521 548 622

349 421 549 621

350 420 450 520 550 620

351 419 451 519 551 619

352 417 452 518 552

353 417 453 517 553 616

354 416 554

PUDDING RIVER WOOD CARVING 644 DUCKS UNLIMITED 646

NEXT/JUMP OUTFITTERS 650 CUBESERIES RV CORP 652

151 218 319 356 414 456 514 556 614 656 713 756 GRUNDENS

153 217 251 318 357 413 457 513 557 612 657 713 756 GRUNDENS

154 216 254 316 358 412 458 512 558 612 658 711 758 811

ARCHERY WORLD 156 LEUPOLD 256 EDGE RODS 259 359 411 459 511 559 611 660 SHIMANO G LOOMS 760 VORTEX

360 409 461 509 561

163 207 307 363 408 463 508 563 663 763 907

164 206 263 306 364 407 465 506 564 606 664 706 764 906

165 205 265 305 365 406 465 506 564 606 664 706 764 906

167 203 267 302 367 404 467 503 567 604

168 201 268 301 368 403 468 502 567 603

171 172 175 FLY TYING RESOURCE CENTER

370 401 468 501 569 601

371 400 468 501 569 601

SPORTSMEN'S LOUNGE

OUTDOOR EMPORIUM 149

OUTDOOR EMPORIUM 146

SPORTCO WAREHOUSE 700

FOOD COURT

ENTRANCE ENTRANCE


SHOWPLEX

4 WOOD MIZER LLC



7


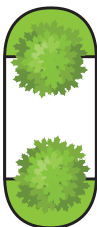
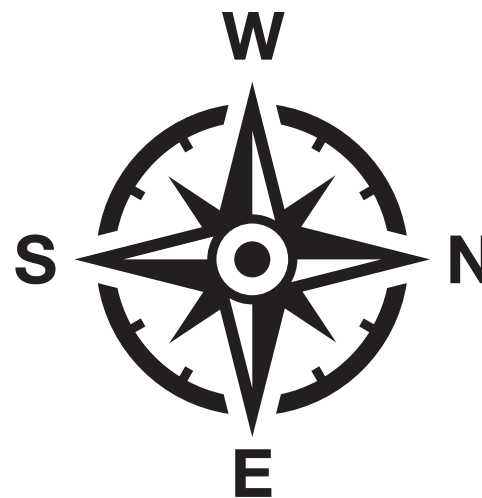


The floor plan is subject to change. Every effort has been made to ensure accuracy until and through press time. Last-minute changes or additions are at the show office. Show admission refunds will not be granted due to a change in listing.

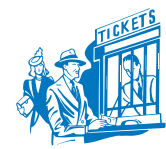
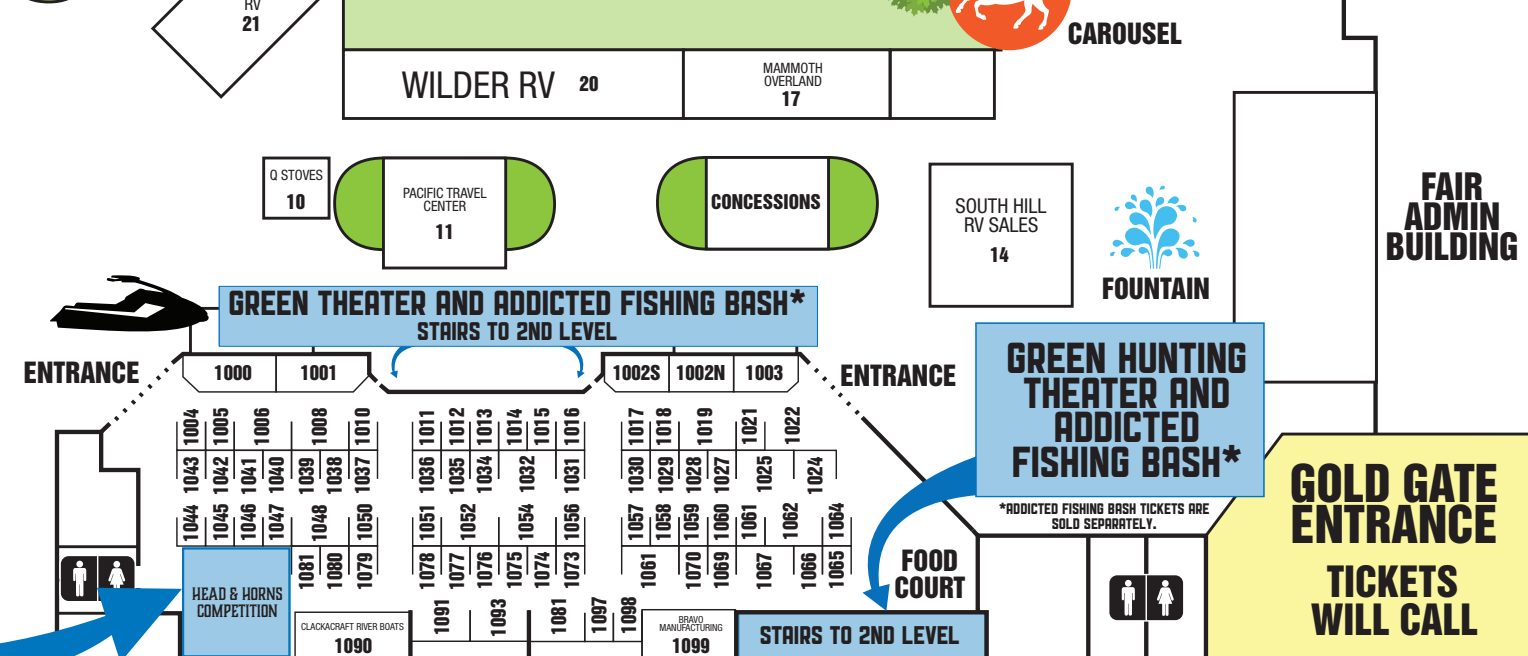
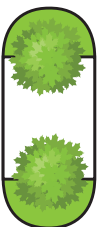


Learn from survival expert **BRETT STOFFEL** and win great prizes at **FISTFUL OF CHEATERS.**

Presented by  

BARREL
REWING CO



BLUE FISHING THEATER

WEDNESDAY - 1/31

| | | |
|---------|------------------|----------------------------|
| 1:00 pm | Doug Saint-Denis | Targeting Puget Sound Coho |
| 2:00 pm | Marc Bush | Walleye 101 |
| 3:00 pm | Robert Kratzer | Bobber Dogging Techniques |
| 4:00 pm | Cameron Black | Understanding Electronics |

THURSDAY - 2/1

| | | |
|---------|---------------|--|
| 1:00 pm | Eric Winther | The How, When and Where to Catching Northern Pikeminnow |
| 2:00 pm | Del Stephens | Albacore A to Z |
| 3:00 pm | Duane Inglin | Bait Curing Eggs, Shrimp, Herring, Anchovies, Answering All Your Questions |
| 4:00 pm | Jordan Knigge | Fishing Spinners for Salmon & Steelhead |

FRIDAY - 2/2

| | | |
|---------|------------------|--|
| 1:00 pm | Robert Kratzer | Effective Bank Fishing Techniques |
| 2:00 pm | Shane Magnuson | Scents, Bait Cures & Tuna Prep Pro Tips |
| 3:00 pm | Brad Hole | Targeting Wild Cutthroat Trout on Lake Sammamish |
| 4:00 pm | Roger Hinchcliff | Advanced Worm & Jig Fishing Techniques for Steelhead |

SATURDAY - 2/3

| | | |
|----------|-----------------------------------|---|
| 11:00 pm | John Kruse | Top NW Fishing Picks for 2024 |
| 12:00 pm | Bill Herzog Jarod Higginbotham | Troutapalooza! |
| 1:00 pm | Big Dave Manners Nick Popov | Bobber Doggin' For Steelhead |
| 2:00 pm | Jarod Higginbotham | Anatomy of a Plug |
| 3:00 pm | David Paul Williams | Columbia Basin Smallmouth: How-to and Where-to |
| 4:00 pm | Brianna Bruce | Sockeye 101 |

SUNDAY - 2/4

| | | |
|----------|------------------|--|
| 11:00 am | Doug Saint-Denis | 4 Must-Use Techniques for Catching Smallmouth Bass |
| 12:00 pm | Richy Harrod | Kokanee Fishing in Washington |
| 1:00 pm | Marc Bush | Intro to Fishing |
| 2:00 pm | Jaime Rodriguez | Targeting Washington Walleye |

GREEN HUNTING THEATER

WEDNESDAY - 1/31

| | | |
|---------|------------------|---|
| 1:00 pm | RJ Marquart | Bird Dog Training – Keeping It Simple |
| 2:00 pm | Travis McClendon | Unraveling the Western States Hunt Applications |
| 3:00 pm | Brett Stoffel | Surviving a Wilderness Emergency |
| 4:00 pm | Russell McDonald | Public Land Turkey Secrets |
| 5:00 pm | Richy Harrod | Techniques for Bowhunting Elk in the PNW |

THURSDAY - 2/1

| | | |
|---------|---------------|--|
| 1:00 pm | Richy Harrod | Public Lands Mule Deer |
| 2:00 pm | RJ Marquart | Bird Dog Training – Getting Started |
| 3:00 pm | David Riley | Blacktail Hunting – Late Season Strategies |
| 4:00 pm | Randy Newberg | Hunt Elk Every Year – Here's How |
| 5:00 pm | John Aldrich | Roughing It Easy – the Ultimate Elk Camp |

FRIDAY - 2/2

| | | |
|---------|------------------|--|
| 1:00 pm | Brett Stoffel | Build a Better Campfire |
| 2:00 pm | Richy Harrod | Techniques for Bowhunting Elk in the PNW |
| 3:00 pm | Randy Newberg | E Scouting – Using Technology for Better Hunting |
| 3:00 pm | Heather Aldrich | Tactics for Fall Bears |
| 5:00 pm | Travis McClendon | Unraveling the Western States Hunt Applications |

SATURDAY - 2/3

| | | |
|----------|------------------|--|
| 11:00 am | Heather Aldrich | Tactics for Fall Bears |
| 12:00 pm | David Riley | Blacktail Hunting – Proven Techniques |
| 1:00 pm | Randy Newberg | Marriage 101 for Elk Hunters |
| 2:00 pm | Russell McDonald | Turkey Hunting – Speaking Their Language |
| 3:00 pm | Brett Stoffel | Survival Myths and Misconceptions |

SUNDAY - 2/4

| | | |
|----------|---------------|--|
| 11:00 am | Brett Stoffel | Surviving a Wilderness Emergency |
| 12:00 pm | Randy Newberg | Q&A – Let's Talk |
| 1:00 pm | RJ Marquart | Bird Dog Training – Keeping It Simple |
| 2:00 pm | David Riley | Blacktail Hunting – Late Season Strategies |

MACK'S LURE WALLEYE TANK



WEDNESDAY - 1/31

| | | |
|---------|---------------|--|
| 1:30 pm | Brianna Bruce | Active Trout Fishing |
| 3:30 pm | Jim Davis | Seasonal Locations and Tactics for Walleye |

THURSDAY - 2/1

| | | |
|---------|---------------|--|
| 1:30 pm | Jim Davis | Seasonal Locations and Tactics for Walleye |
| 3:30 pm | Brianna Bruce | Trout 101 |

FRIDAY - 2/2

| | | |
|---------|---------------|--|
| 1:30 pm | Jim Davis | Seasonal Locations and Tactics for Walleye |
| 4:30 pm | Brianna Bruce | Trolling For Trout |

SATURDAY - 2/3

| | | |
|----------|---------------|-----------------------------------|
| 11:30 pm | Brianna Bruce | Active Trout Fishing |
| 1:30 pm | Eric Braaten | Jigging For Walleye In Washington |

SUNDAY - 2/4

| | | |
|----------|-----------------|--|
| 12:30 pm | Jaime Rodriguez | Overview of Walleye Bait Presentations |
| 2:30 pm | Brianna Bruce | Bank Fishing For Trout |

PRODUCT CATEGORY LIST

The category list is subject to change. Every effort has been made to ensure accuracy until and through press time. Last-minute changes or additions are at the show office. Show admission refunds will not be granted due to a change in listing.

AFRICAN SAFARIS / HUNTS

| | |
|---|------|
| BRIAN SUDDABY SAFARIS AFRICA | 412 |
| DINKWE SAFARIS | 552 |
| EAST CAPE SAFARIS | 1071 |
| FW SAFARI | 1008 |
| HOTFIRE HUNTING & FISHING SAFARIS | 1064 |
| ILIWA SAFARIS | 1047 |
| JOUBERT PRO HUNT | 363 |
| LATEGAN SAFARIS | 614 |
| ROSEDALE SAFARIS | 1031 |
| RUSS FIELD SAFARIS | 402 |

AFTERMARKET TRUCK ACCESSORIES

| | |
|----------------------------------|------|
| AUTO FX251 | |
| EXTREME SPORTSMAN TRAILERS | 1001 |
| MULE EXPEDITION OUTFITTERS | 144 |
| NEXT/JUMP OUTFITTERS | 650 |
| TORK LIFT CENTRAL | 452 |

ALASKA FISHING

| | |
|--|------|
| ALASKA KINGFISHERS | 526 |
| ALASKA OUTDOORS ADDICTION | 560 |
| BECHAROF LODGE FISHING | 518 |
| GLACIER BEAR LODGE | 206 |
| ISLAND POINT LODGE | 421 |
| MAJESTIC EAGLE LODGE | 414 |
| NORTHERN PROFESSIONAL OUTFITTERS AND GUIDE SERVICE | 1057 |
| PERIL SKY LLC | 318 |
| ROCKY POINT RESORT | 371 |
| THE WILD ALASKAN LODGE | 1040 |
| VONNIES CHARTERS | 500 |
| WATERS EDGE LODGE | 465 |

ALASKA HUNTING

| | |
|--|------|
| NORTHERN PROFESSIONAL OUTFITTERS AND GUIDE SERVICE | 1057 |
|--|------|

ALBERTA HUNTING

| | |
|----------------------------------|------|
| ALBERTA BOREAL OUTFITTING | 1034 |
| MISTY RIVER OUTFITTERS LTD. | 354 |

APPAREL

| | |
|--------------------------|------|
| ADDICTED FISHING | 468 |
| BURTONS MERCH | 1014 |
| FIRESIDE PINE | 344 |
| GHOST BULL HUNTING | 1052 |
| GRUNDENS | 756 |

| | |
|---------------------------------|------|
| NO LIMITS & CO | 1045 |
| OUTDOOR BEARDS | 1080 |
| SIX CHICKS BOUTIQUE LLC | 521 |
| SIXES AND SEVENS OUTDOORS | 1027 |
| SNYDER INNOVATIONS LLC | 360 |
| THE BLACKTAIL COMPANY | 1093 |
| ZEROFIT USA | 424 |

ARCHERY PRODUCTS

| | |
|------------------------------|---------|
| ARCHERY WORLD | 156 |
| NIMROD OUTDOOR COMPANY | 1000 |
| SKOOKUM ARCHERY CLUB | ARCHERY |

ART / HOME DECOR

| | |
|---|------|
| ALEX ARTS & CONSTRUCTION | 1 |
| BARTHOLET WILDLIFE GALLERY | 1002 |
| COATNEY KUSTOM FAB | 1091 |
| GARY M HINTZ | 1022 |
| KNIGHTS WELDING | 404 |
| PUDDING RIVER WOOD CARVING STUDIO | 644 |
| THE WET NOSE | 1024 |

ASSOCIATION / NON-PROFIT / GOVT AGENCY

| | |
|---|---------|
| CEDAR RIVER BOWMEN | 1015 |
| CENTRAL PIERCE FIRE & RESCUE | PV-1 |
| DELTA WATERFOWL | 1029 |
| MILITARY ORDER OF THE PURPLE HEART | 124 |
| MULE DEER FOUNDATION | 458 |
| NORTHWEST GAMEHAWKERS | 426 |
| NRA-ILA WA | 450 |
| NRA/SHOWS & EXHIBITS DEPT | 1069 |
| PUGET SOUND ANGLERS-STATE BOARD | 419 |
| PUGET SOUND LABRADOR RETRIEVER CLUB | 126 |
| PUGET SOUND RECREATIONAL FISHERIES ENHANCEMENT FUND | 548 |
| ROCKY MOUNTAIN ELK FOUNDATION | 1032 |
| SAFARI CLUB INTERNATIONAL | 1025 |
| SEATTLE-TACOMA GERMAN WIREHAIR POINTER CLUB | 125 |
| SKOOKUM ARCHERY CLUB | ARCHERY |
| SOUTH SOUND BIRD DOG CLUB | 128 |
| SOUTH SOUND STRUTTERS NWTFC CHAPTER | 1074 |
| THE FALLEN OUTDOORS TEAM WA | 1035 |
| US COAST GUARD 13TH DISTRICT | 519 |
| VETERANS OF FOREIGN WARS | 164 |
| WA DEPT OF FISH & WILDLIFE | 550 |
| WASHINGTON STATE MUZZLELOADER | 1003N |

| | |
|--|------|
| WASHINGTONIANS FOR WILDLIFE CONSERVATION | 364 |
| WESTERN WA ENGLISH SPRINGER SPANIEL CLUB | 127 |
| WESTERN WASHINGTON WALLEYE CLUB | 444 |
| YOUTH OUTDOORS UNLIMITED | 1012 |

ATV'S, UTV'S

| | |
|----------------------------------|------|
| EXTREME SPORTSMAN TRAILERS | 1001 |
| I-90 MOTORSPORTS | 142 |

BC FISHING

| | |
|---|------|
| BROWNS BAY RESORT | 1051 |
| CRITTER COVE MARINE GROUP INC | 406 |
| EUREKA PEAK LODGE & OUTFITTERS | 1078 |
| HOOK N THEM UP FISHING CHARTERS | 171 |
| NOOTKA MARINE ADVENTURES | 1005 |
| QUALICUM RIVERS SALMON FISHING RESORT | 1030 |
| QUEEN CHARLOTTE LODGE | 348 |
| THE NORTH SHORE LODGE | 620 |

BC HUNTING

| | |
|---|------|
| BABINE GUIDE OUTFITTERS/TUKII LODGE | 416 |
| BC GUIDE OUTFITTERS | 554 |
| BOWRON RIVER GUIDING | 1011 |
| COVERT OUTFITTING | 624 |
| EUREKA PEAK LODGE & OUTFITTERS | 1078 |
| NADINA GUIDE OUTFITTERS | 302 |
| TX OUTFITTERS | 1059 |
| WOLVERINE RANGE OUTFITTERS | 346 |

BLACK POWDER PRODUCTS

| | |
|----------------------------------|--------|
| MUZZLELOADER SUPPLY | 1003 |
| WA STATE MUZZLELOADER ASSN | 1003-N |

BOAT DEALERS

| | |
|-------------------------------------|---------------------|
| ABSTRACT WATERCRAFT | 12 |
| ARIMA BOATS | 135N |
| BOULTON POWERBOATS INC | 3, 268 |
| CLACKACRAFT RIVER BOATS | 1090 |
| DEFIANCE MARINE | 1302 |
| KING SALMON MARINE INC | 1310 |
| PUGET MARINA | 1301, 1306 |
| TACOMA BOAT SALES AND SERVICE | 643 |
| VERLES SPORTS CENTER & MARINE | 640, 840, 841, FD-4 |
| WOOLDRIDGE BOATS INC | 654 |

BOAT MANUFACTURERS

| | |
|------------------------------|--------|
| ABSTRACT WATERCRAFT..... | 12 |
| ALLIED BOATS..... | 1355 |
| BOULTON POWERBOATS INC..... | 3, 268 |
| CLACKACRAFT RIVER BOATS..... | 1090 |
| WOOLDRIDGE BOATS INC..... | 654 |

BOAT - PROPELLERS

| | |
|------------------------------------|---------------------|
| VERLES SPORTS CENTER & MARINE..... | 640, 840, 841, FD-4 |
|------------------------------------|---------------------|

BOAT - TOWERS

| | |
|---------------------------------------|---------------------|
| BAREWEST WAKEBOARD & FISH TOWERS..... | 527 |
| FISH ON SPORTS..... | 713 |
| VERLES SPORTS CENTER & MARINE..... | 640, 840, 841, FD-4 |
| WHODAT TOWERS..... | 417 |

BOAT - TRAILERS

| | |
|----------------------|--------------|
| PUGET MARINA..... | 11, 13, 0306 |
| DEFIANCE MARINE..... | 1302 |

CALIFORNIA HUNTING / FISHING

| | |
|--------------------------------|-----|
| ANGLERS INN INTERNATIONAL..... | 558 |
|--------------------------------|-----|

CAMPING PRODUCTS

| | |
|------------------------------|------|
| BRAVO MANUFACTURING INC..... | 1099 |
| HARROD OUTDOORS LLC..... | 453 |
| HOME IN THE WILD..... | 1095 |
| LEDLENSER..... | 1041 |
| ROCKAGATOR..... | 370 |
| SURVIVOR PRODUCTS LLC..... | 207 |

CARS / TRUCKS / MOTORCYCLES

| | |
|--|------|
| EXTREME SPORTSMAN TRAILERS..... | 1001 |
| I-90 MOTORSPORTS..... | 142 |
| WESTERN WASHINGTON TOYOTA DEALERS..... | 440 |

CLEANING PRODUCTS

| | |
|-----------------------------|-----|
| STAR BLINK PRODUCT INC..... | 657 |
|-----------------------------|-----|

DOG KENNELS / TRAINING

| | |
|--------------------------|------|
| QUICKSILVER KENNELS..... | 1056 |
|--------------------------|------|

E-BIKES

| | |
|---------------------|-----|
| SUNRISE EBIKES..... | 758 |
|---------------------|-----|

EDUCATIONAL

| | |
|--|------|
| CHIRO ONE WELLNESS CENTER..... | 1066 |
| NRA-ILA WA..... | 450 |
| NRA/SHOWS & EXHIBITS DEPT..... | 1069 |
| OLD SCHOOL GUN SCHOOL..... | 168 |
| PACIFIC STATES MARINE FISHERIES COM..... | 549 |
| PIKEMINNOW PROGRAM..... | 549 |
| SEATTLE FISHING COMPANY..... | 658 |

ELECTRONICS

| | |
|---|------|
| FISH WASHINGTON LLC DBA CATCH ZONE..... | 368 |
| HUMMINGBIRD ELECTRONICS..... | 506 |
| SPOT LLC..... | 1016 |
| T-MOBILE..... | 1062 |

FIREARM TRAINING

| | |
|----------------------------|-----|
| OLD SCHOOL GUN SCHOOL..... | 168 |
|----------------------------|-----|

FIREARMS

| | |
|----------------------------------|------|
| INFINITE PRODUCT SOLUTIONS..... | 367 |
| LONG SHOT INDOOR RANGE INC..... | 1058 |
| SILENCER CENTRAL..... | 1054 |
| WARNE MANUFACTURING COMPANY..... | 563 |

FISHING PRODUCTS

| | |
|--|----------|
| ACTIVE OUTDOORS..... | 706 |
| ADDICTED FISHING..... | 468 |
| BEUMAC ENTERPRIZES..... | 606 |
| BRADS FISHING & MAC PROP SAVERS..... | 600 |
| CANNON DOWNRIGGERS..... | 506 |
| CRUSTACEAN SENSATION BAITING PRODUCTS..... | 456 |
| EVERGOING PRODUCTS GROUP LLC..... | 100, 105 |
| FISH WASHINGTON LLC DBA CATCH ZONE..... | 368 |
| GAMAKATSU USA INC..... | 508 |
| GRUNDENS..... | 756 |
| LESTERS AMERICAN MADE MARINE GEAR..... | 556 |

| | |
|-------------------------------|-----|
| LURE JENSEN..... | 764 |
| MCCOMIES CUSTOM LURES..... | 806 |
| MACKS LURE..... | 567 |
| MASCHMEDT & ASSOCIATES..... | 664 |
| MY ROD HOLDER LLC..... | 520 |
| NORTHWEST BAIT & SCENT..... | 603 |
| OKUMA FISHING PRODUCTS..... | 706 |
| OREGON LURE COMPANY..... | 457 |
| PAUTZKE BAIT COMPANY..... | 407 |
| PROLITE ROD TECHNOLOGY..... | 409 |
| RAPALA USA..... | 764 |
| ROBOLIZE LLC..... | 307 |
| SCOTTY DOWNRIGGERS..... | 503 |
| SHIMANO FISHING PRODUCTS..... | 660 |
| STRYKER RODS..... | 463 |
| YAKIMA BAIT COMPANY..... | 763 |

FISHING ROD MANUFACTURER

| | |
|--------------------------------|-----|
| DAIWA..... | 664 |
| EDGE RODS..... | 259 |
| GLOOMIS..... | 660 |
| LAMIGLAS INC..... | 601 |
| MASCHMEDT & ASSOCIATES..... | 664 |
| NORTH FORK COMPOSITE RODS..... | 259 |
| OKUMA..... | 706 |
| PROLITE ROD TECHNOLOGY..... | 409 |
| SHAMANO..... | 660 |
| STRYKER RODS..... | 463 |

FISHING TACKLE

| | |
|---------------------------------------|-----|
| ANTIQUE TACKLE COLLECTORS..... | 130 |
| BEUMAC ENTERPRISES..... | 606 |
| BRADS FRISHING & MAC PROP SAVERS..... | 600 |
| CHROME JUNKIES..... | 301 |
| COLD WATER STRONG..... | 461 |
| FISHERMANS GOLD..... | 408 |
| JEFF ROBLES AND ASSOCIATES..... | 564 |
| L H FRENCH CO..... | 506 |
| LAMIGLAS INC..... | 601 |
| LUHR JENSEN..... | 764 |
| MADAME LURE..... | 502 |
| MACK'S LURE..... | 567 |
| MCOMIES CUSTOM LURES..... | 806 |
| NORMARK..... | 764 |
| NORTHWEST BAIT & SCENT..... | 603 |
| PERUVIAN KILLER JIGS..... | 451 |
| PRO-TROLL..... | 663 |
| RAPALA USA..... | 764 |
| ROBOLIZE LLC..... | 307 |
| SCOTTY FISHING AND MARINE..... | 503 |
| SEATTLE FISHING COMPANY..... | 658 |
| THE DON COFFEY COMPANY..... | 660 |
| YAKIMA BAIT COMPANY..... | 763 |

FISHING TACKLE - MANUFACTURER

| | |
|---------------------------|-----|
| FISHERMANS GOLD..... | 408 |
| MADAME LURE..... | 502 |
| MCOMIES CUSTOM LURES..... | 806 |
| MACKS LURE..... | 567 |
| OREGON LURE COMPANY..... | 457 |
| PRO TROLL..... | 663 |
| RAPALA..... | 764 |
| YAKIMA BAIT COMPANY..... | 763 |

FISHING TACKLE - RETAIL

| | |
|---------------------------------|---------------|
| COLDWATER STRONG..... | 461 |
| SPORTCO WAREHOUSE..... | 700, 760, 807 |
| WESTERN FISHING OPERATIONS..... | 559 |

FLY FISHING PRODUCTS

| | |
|-----------------------------------|----------|
| EVERGOING PRODUCTS GROUP LLC..... | 100, 105 |
|-----------------------------------|----------|

FOOD AND BEVERAGE

| | |
|--|------|
| BLACK LABEL BBQ..... | 153 |
| BOBS FREAKIN NUTS..... | 1006 |
| CAMANO ISLAND COFFEE ROASTERS LLC..... | 1046 |
| CHEESEBUTTA..... | 317 |

| | |
|---|------|
| FARM FRESH NORTHWEST..... | 1077 |
| GARLIC GOURMAY/GARLIC EXPRESSIONS..... | 656 |
| GHOST SCREAM HOT SAUCE..... | 365 |
| H & H BRANDS 30 SECOND SALSA/CAMPFIRE FOODS NW..... | 501 |
| HARROD OUTDOORS LLC..... | 453 |
| KENLEE JERKY..... | 361 |
| NATURE NATES..... | 1028 |
| NORTHWEST SPICES..... | 1085 |
| OMG OLIVE OILS & VINEGARS..... | 167 |
| SMITH BROTHERS FARMS..... | 625 |
| THE BLACK FLAG..... | 1018 |
| THE SWEETEST THINGS..... | 545 |
| WERE THE WURST..... | 403 |

FOOTWEAR

| | |
|-----------------------------------|-----|
| ADVANCE TECH ORTHOTICS..... | 517 |
| DANNER INC/LACROSSE FOOTWEAR..... | 609 |
| WHITES BOOTS..... | 609 |

GAME CALLS

| | |
|------------------------|-----|
| FANTOM GAME CALLS..... | 154 |
|------------------------|-----|

GUN CLUB / RANGE

| | |
|---------------------------------|------|
| LONG SHOT INDOOR RANGE INC..... | 1058 |
| TACOMA SPORTSMENS CLUB..... | 564 |

GUN SAFES

| | |
|-----------------------------|-----|
| NORTHWEST SAFE COMPANY..... | 148 |
|-----------------------------|-----|

FISHING HOOK MANUFACTURERS

| | |
|------------------------|-----|
| GAMAKATSU USA INC..... | 508 |
| MUSTAD AMERICA..... | 400 |
| OWNER HOOKS..... | 706 |
| VMC HOOKS..... | 764 |

HOME PRODUCTS

| | |
|---------------------------|------|
| COATNEY KUSTOM FAB..... | 1091 |
| GARAGE FORCE..... | 357 |
| HOMEKO SALES LLC..... | 205 |
| LEAFFILTER NORTH LLC..... | 1075 |

HUNTING PRODUCTS

| | |
|--|------|
| ACTIVE OUTDOORS..... | 706 |
| AMERICAN DELTA PRODUCTS..... | 1065 |
| BRAVO MANUFACTURING..... | 1099 |
| EXTREME SPORTSMAN TRAILERS..... | 1001 |
| FANTOM GAME CALLS..... | 154 |
| INFINITE PRODUCT SOLUTIONS..... | 367 |
| KNOTTY DUCK DECOYS/ESTABLISHED OUTFITTERS..... | 319 |
| LEDLENSER..... | 1041 |
| LEUPOLD & STEVENS INSTRUMENTS INC..... | 256 |
| NIMROD OUTDOOR COMPANY..... | 1000 |
| NORTHWEST SCOPEPRO..... | 218 |
| OSPREY SCOPES..... | 1067 |
| ROCKAGATOR..... | 370 |
| SILENCER CENTRAL..... | 1054 |
| TRACT OPTICS..... | 1043 |

IDAHO HUNTING

| | |
|-------------------------------------|-----|
| BITTERROOT MOUNTAIN OUTFITTERS..... | 422 |
| IDAHO ELK OUTFITTERS..... | 263 |

INSURANCE / FINANCIAL

| | |
|---------------------------------------|------|
| EDWARD JONES..... | 1070 |
| STATE FARM PAUL HENDERSON AGENCY..... | 356 |

INTERNATIONAL HUNTING / FISHING

| | |
|--|-----|
| KAWEKA HUNTING ADVENTURES..... | 401 |
| KLUANE WILDERNESS LODGE..... | 519 |
| KNOTTY DUCK DECOYS/ESTABLISHED OUTFITTERS..... | 319 |
| SHOOTING STIX SAFARIS..... | 203 |

JEWELRY

| | |
|--------------------------|-----|
| WILDERNESS MINT LLC..... | 446 |
| CLASSIC CREATIONS..... | 561 |

KAYAKS

| | |
|---------------------|---------------|
| OLDTOWN KAYAKS..... | FD-1 |
| HOBBIE..... | 700, 760, 807 |

KNIVES / SHARPENERS

| | |
|--|------|
| AMERICAN DELTA PRODUCTS/HUNTER HONER | 1065 |
| CUTCO CUTLERY WASHINGTON | 512 |
| NORTHWEST SCOPEPRO | 218 |
| ROE MORRIS KNIFEMAKING | 1004 |
| TEXAN KNIVES..... | 611 |

LOG HOMES

| | |
|-----------------------------|------|
| GOLD VALLEY LOG HOMES | 1044 |
|-----------------------------|------|

LOTIONS

| | |
|------------------------|------|
| HAMPSAN | 1061 |
| HAWAIIAN MOON | 351 |
| METOLIUS HEMP CO | 621 |

MAPS

| | |
|--|-----|
| FISH WASHINGTON LLC DBA CATCH ZONE | 368 |
| RUGGED MAPS..... | 316 |

MARINE ACCESSORIES

| | |
|--|------|
| BAREWEST WAKEBOARD & FISH TOWERS..... | 527 |
| FISH ON SPORTS..... | 713 |
| KING SALMON MARINE INC | 1310 |
| LESTERS AMERICAN MADE MARINE GEAR..... | 556 |
| SEA FOAM..... | 514 |
| WHODAT TOWERS..... | 417 |
| HAXTONS CANVAS & UPHOLSTERY LLC | 543 |

MARINE SERVICE / REPAIR

| | |
|---------------------------------------|-----|
| HAXTONS CANVAS & UPHOLSTERY LLC | 543 |
|---------------------------------------|-----|

MEDIA

| | |
|------------------------------------|-----|
| ADDICTED FISHING..... | 468 |
| FISH HUNT NORTHWEST | 569 |
| NORTHWEST SPORTSMAN MAGAZINE | 352 |
| NORTHWESTERN OUTDOOR RADIO | 358 |

MEXICO FISHING

| | |
|---------------------------------|------|
| ANGLERS INN INTERNATIONAL | 558 |
| BAJA PIRATES..... | 216 |
| BAJA RANCHEROS OF LA PAZ | 1010 |
| JW WORLD RESOURCES | 369 |

MONTANA HUNTING / FISHING

| | |
|--------------------------------|------|
| 5 S OUTFITTING | 513 |
| BARTLETT CREEK OUTFITTERS..... | 1079 |
| FORD CREEK GUEST RANCH | 201 |

NEW ZEALAND HUNTING / FISHING

| | |
|---------------------------------|-----|
| KAWEKA HUNTING ADVENTURES | 401 |
|---------------------------------|-----|

OPTICS

| | |
|---|------|
| LEUPOLD & STEVENS INSTRUMENTS INC | 256 |
| MAVEN..... | 448 |
| NORTHWEST SCOPEPRO | 218 |
| NOVAGRADE..... | 254 |
| OSPREY SCOPES..... | 1067 |
| THERMAL DISPATCH OPTICS | 1013 |
| TRACT OPTICS | 1043 |
| YI SHINE TECH | 143 |
| VORTEX..... | 760 |

OREGON FISHING

| | |
|-------------------------------------|-----|
| DOCKSIDE CHARTERS | 217 |
| KEVIN LARSON GUIDE SERVICE LLC..... | 265 |
| PACIFIC SALMON CHARTERS..... | 516 |
| TWISTED WATERS GUIDE SERVICE | 604 |

OREGON HUNTING

| | |
|-----------------------|------|
| FOUR ACES RANCH | 1037 |
|-----------------------|------|

OUTBOARD MOTORS

| | |
|-------------------------------------|---------------|
| DEFIANCE MARINE..... | 1302 |
| KING SALMON MARINE INC | 1310 |
| MINN KOTA TROLLING MOTORS..... | 506 |
| PUGET MARINA..... | 1301-1306 |
| TACOMA BOAT SALES AND SERVICE | 643 |
| VERLES..... | 640, 840, 841 |

PACKS / BAGS

| | |
|-----------------------------|------|
| NIMROD OUTDOOR COMPANY..... | 1000 |
| WESTERN CASE | 151 |

RV ACCESSORIES

| | |
|--------------------------------|---|
| APACHE CAMPING CENTER INC..... | 8 |
|--------------------------------|---|

RV REPAIR

| | |
|--|-----|
| GENESIS AUTOMOTIVE & RV REPAIR INC | 172 |
| VALLEY RV SUPERCENTER..... | 2 |

RV SERVICE

| | |
|--------------------------------|---|
| APACHE CAMPING CENTER INC..... | 8 |
| VALLEY RV SUPERCENTER..... | 2 |

RV'S

| | |
|-------------------------------|--------|
| APACHE CAMPING CENTER INC8 | |
| CUBESERIES RV CORP | 652 |
| MAPLE GROVE RV | 21 |
| MAMMOTH OVERLAND | 17 |
| PACIFIC TRAVEL CENTER..... | 11 |
| SOUTH HILL RV SALES INC | 14 |
| VALLEY RV SUPERCENTER..... | 2 |
| WILDER RV | 19, 20 |

SAFES

| | |
|------------------------------|-----|
| NORTHWEST SAFE COMPANY | 148 |
|------------------------------|-----|

SPECIALTY GIFTS

| | |
|---------------------------------|--------|
| BLAZE ANTI FOG..... | 306 |
| CLASSIC CREATIONS..... | 561 |
| CLIX THERAPY | 425 |
| FROZEN CRITTERS.NET | 1098 |
| HAWAIIAN MOON | 351 |
| HOMECO SALES LLC | 205 |
| IMAGEWORKS..... | 350 |
| LEDLENSER..... | 1041 |
| LIGHTHOUSE CAVALCADE | 655 |
| MAGIC MASSEUSE | 445 |
| MARAKESH LEATHER..... | 510 |
| METOLIUS HEMP CO | 621 |
| NW REC LLC | FD - 3 |
| OUTDOOR BEARDS..... | 1080 |
| PNW INTERNATIONAL INC | 163 |
| RICK OLSON COMPANY..... | 511 |
| SIX CHICKS BOUTIQUE LLC | 521 |
| SIXES AND SEVENS OUTDOORS | 1027 |
| SNAP IT HOT | 269 |
| THE BLACKTAIL COMPANY | 1093 |
| WESTERN CASE..... | 151 |
| WOOD MIZER LLC..... | 4 |

SPORTING GOODS

| | |
|---|---------------|
| NEXT ADVENTURE PADDLE SPORTS CENTER | FD - 1 |
| OUTDOOR EMPORIUM..... | 863, 870 |
| SPORTCO WAREHOUSE..... | 700, 760, 807 |

SUNGLASSES

| | |
|---------------------------|-----|
| THE SUNGLASS GUY INC..... | 165 |
|---------------------------|-----|

SURVIVAL / FIRST AID PRODUCTS

| | |
|--|------|
| EMERGENCY RESPONSE INTERNATIONAL | 440 |
| PREPSENTIAL | 1048 |
| SNAP IT HOT | 269 |

TAXIDERMY

| | |
|-------------------------|-----|
| TRAPLINE TAXIDERMY..... | 612 |
|-------------------------|-----|

TENTS

| | |
|---------------------------|------|
| BRAVO MANUFACTURING | 1099 |
| HOME IN THE WILD | 1095 |

TOOLS / EQUIPMENT

| | |
|---|-----|
| AMS OIL PEARSON-LIBERTY ASSISTS LLC | 267 |
| WOOD MIZER LLC..... | 4 |

TRAILERS

| | |
|------------------------|------|
| MAMMOTH OVERLAND | 17 |
| TRAILER WORLD | 1003 |

TRAVEL / RESORT / TOURISM

| | |
|--|----------|
| BROWNS BAY RESORT | 1051 |
| CONCONULLY CHAMBER OF COMMERCE | 553 |
| GRANT COUNTY TOURISM..... | 509 |
| GRAYS HARBOR TOURISM..... | 1042 |
| JW WORLD RESOURCES | 343, 427 |
| NESKOWIN CREEK RV RESORT/SPR OF OREGON | 622 |
| NOOTKA MARINE ADVENTURES | 1005 |
| QUEEN CHARLOTTE LODGE..... | 348 |
| WATERS EDGE LODGE | 465 |
| ZEROGUIDEFEEES.COM..... | 616 |

TRUCKS/SUV/4X4

| | |
|--|------|
| EXTREME SPORTSMAN TRAILERS..... | 1001 |
| I-90 MOTORSPORTS..... | 142 |
| WESTERN WASHINGTON TOYOTA DEALERS..... | 440 |

UPLAND BIRD HUNTING

| | |
|--------------------------------------|------|
| MILLER RANCH & HUNTING PRESERVE..... | 1017 |
|--------------------------------------|------|

UTAH HUNTING

| | |
|-------------------------|-----|
| ZEROGUIDEFEEES.COM..... | 616 |
|-------------------------|-----|

WALL TENTS / STOVES

| | |
|-------------------------------|------|
| BRAVO MANUFACTURING INC | 1099 |
| Q STOVES | 10 |

WASHINGTON FISHING

| | |
|--|------|
| ANGLERS EDGE SPORTFISHING | 359 |
| ANGLERS GUIDE SERVICE..... | 524 |
| BIG SALMON RESORT/LING DADDY..... | 420 |
| EXCEL FISHING CHARTERS | 546 |
| FREEDOM CHARTERS..... | 1076 |
| OCEAN SPORTFISHING CHARTERS..... | 571 |
| OUTLANDER CHARTERS | 619 |
| PACIFIC SALMON CHARTERS..... | 516 |
| RIDGE TO RIVER OUTDOORS LLC | 443 |
| SEAWALKER CHARTERS/JOHN THOMAS ADVENTURES..... | 459 |
| TWISTED WATERS GUIDE SERVICE | 604 |
| WINDSONG CHARTERS..... | 175 |

WATERCRAFT

| | |
|--------------------------------|----------|
| OLDTOWN KAYAKS..... | FD-1 |
| EVERGOING PRODUCTS GROUP | 100, 105 |

WATERFOWL HUNTING PRODUCTS

| | |
|-----------------------|------|
| DELTA WATERFOWL | 1029 |
| THE DUCK CAMP | 305 |

WASHINGTON HUNTING

| | |
|---------------------------------------|------|
| ELK JUNCTION OUTFITTERS GUIDING | 1060 |
| FAMILY HUNTING CLUB | 1036 |
| MILLER RANCH & HUNTING PRESERVE..... | 1017 |
| THE BLACKTAIL COACH | 1050 |

The category list is subject to change. Every effort has been made to ensure accuracy until and through press time. Last-minute changes or additions are at the show office. Show admission refunds will not be granted due to a change in listing.



LEUPOLD



VX-6HD

THE ULTIMATE HUNTING SCOPE



BE RELENTLESS

